

ANNI[®]L

EUROPE 2018



DISCOVER





ANVIL® 2018

ARE YOU an innovator, an original, an idealist, yet a realist, an urbaner, and an iconic trendsetter?

Here's your intro to four new collections in four new fabrics that are all-new all-ANVIL® designed just for you.

The **FREEDOM** collection's poly/viscose is loose yet soft and follows your every move.

The **LIGHT TERRY** collection lets you live somewhere between t-shirt and sweatshirt, day or night.

The **STRETCH** collection, hugs your curves giving you total comfort all day and through the night.

The **CURVE** Tee is 100% polyester fashion-athletic with anti-microbial and moisture wicking properties, so you don't have to sweat the small stuff.

ANVIL® STYLE moves toward unisex designs in crewnecks, v-necks, scoops, curved hems, tanks, hoodies, and now... pants.

Yes, **PANTS!** You know what they say about first impressions. Well make a great one with our lightweight terry joggers, cut for a perfect fit for both sexes.

You'll also discover the latest on-trend hues like dusty rose, heather slate and heather navy.

It's our, and your, best year yet. This is our invitation for you to discover a new wear-with-all collection, because

FASHION IS FOR EVERYONE

ANVIL®



NEW COLLECTIONS, NEW FABRICS

ANVIL® is a brand that weaves its way into everyday lives with fabrics, textures and on-trend blends for your individual style.

Our new **Freedom Collection** is a lightweight, silky polyester/viscose. It's relaxed, with a longer, fuller fit that's great for layering, draping and hi-lo waistlines—tuck them in and wear them out.

Our **Unisex Light Terry Collection** is totally new. Not a tee. Not a sweatshirt. But a lightweight drape fabric for a casual fit.

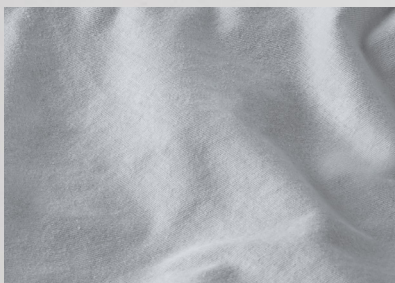
The new **Curve Tee** is designed with urban movers in mind; lovers of fashion and fitness. Moisture-control wicking to stay dry and cool, anti-microbial, to keep it fresh, all with a curve bottom hem—it's performance fashion at its fittest.

Last but not least, we introduce **The Stretch Collection**. A super silky cotton/polyester/spandex combo for curve-hugging comfort that moves with your groove. Dancing or yogaing, it's all form-fitting.

ANVIL®



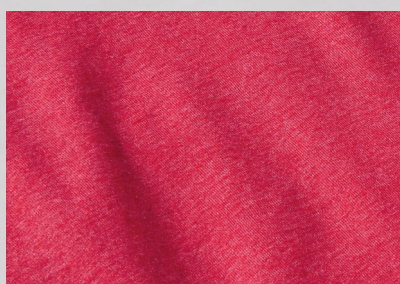
NEW FREEDOM
136 g/m² / Fabric 32/1
Pre-Shrunk 65% Polyester/
35% Viscose



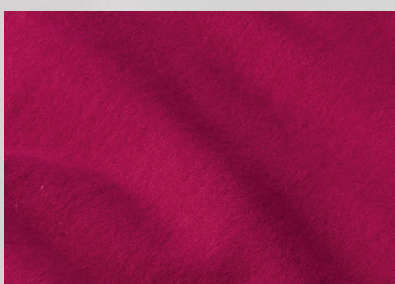
FEATHERWEIGHT
110 g/m² / Fabric 40/1
Pre-Shrunk 100% Cotton**



NEW STRETCH
146 g/m² / Fabric 40/1
Pre-Shrunk 57% Cotton/
38% Polyester/5% Spandex^Δ



TRI-BLEND
159 g/m² / Fabric 32/1
Pre-Shrunk 50% Polyester/
25% Cotton/25% Viscose^Δ



LIGHTWEIGHT
146 g/m² / Fabric 32/1
Pre-Shrunk 100% Cotton**



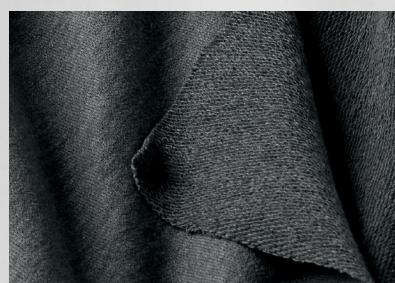
NEW MIDWEIGHT WICKING
170 g/m² / Fabric 29/1
100% Polyester



MIDWEIGHT
170 g/m² / Fabric 24/1 – 26/1
Pre-Shrunk 100% Cotton**



NEW LIGHT TERRY
186 g/m² / Fabric 32/1
Pre-Shrunk 60% Cotton/
40% Polyester^Δ



FRENCH TERRY
237 g/m² / Fabric 30/1
Pre-Shrunk 60% Polyester/
40% Terry Fleece^Δ



DOUBLE PIQUÉ
210 g/m² / Fabric 30/1
Pre-Shrunk 100% Cotton
Double Piqué^Δ



FLEECE
245 g/m² / Fabric 30/1
Pre-Shrunk 75% Cotton/
25% Polyester Fleece^Δ

* Some fibre content varies by colour; see product listings for details

** Cotton is ring spun yarn

^Δ Cotton is combed ring spun yarn

DEVELOPED TO DECORATE

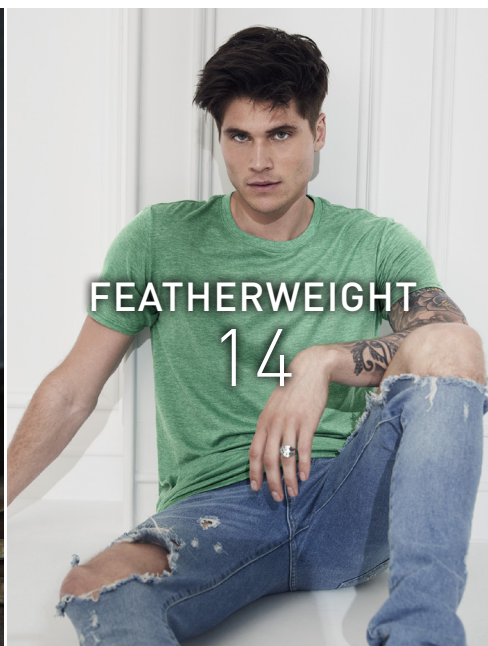


ANVIL®

Everything we make is decorator-friendly with a high-stitch density that makes it the perfect substrate for any design. We pay homage to New York by decorating and designing our shirts with 10 different techniques; from traditional screen printing to DTG, vinyl cut letters, foil stamping... all with design-worthy and wear-worthy results. Visit anvil.eu to find out about these decorating techniques and more.



2018 COLLECTION





* Some fabric weights vary slightly; please see product page for more information.

FREEDOM 136 g/m ²	13	37PVL	NEW Women's Freedom Sleeveless Tee
	13	32PVL	NEW Women's Freedom Tank
	13	36PVL	NEW Women's Freedom Tee
FEATHERWEIGHT 110 g/m ²	15	361	Adult Featherweight Tee
	15	391	Women's Featherweight Scoop Tee
	16	362	Adult Featherweight V-Neck Tee
	16	392	Women's Featherweight V-Neck Tee
	16	399	Women's Featherweight Long Sleeve Scoop Tee
STRETCH 146 g/m ²	18	2455L	NEW Women's Stretch 3/4 Sleeve Tee
	18	2420L	NEW Women's Stretch Tank
TRI-BLEND 159 g/m ²	21	6750L	Women's Tri-Blend Tee
	21	6750	Adult Tri-Blend Tee
	22	6752	Adult Tri-Blend V-Neck Tee
	22	6750VL	Women's Tri-Blend V-Neck Tee
	24	6756L	Women's Tri-Blend Deep Scoop 1/2 Sleeve Tee
	24	6751L	Women's Tri-Blend Racer Back Tank
	24	6755	Adult Tri-Blend 3/4 Sleeve Raglan Tee
	27	6759	Adult Tri-Blend Full-Zip Hooded Jacket
LIGHTWEIGHT 146 g/m ²	27	6759L	Women's Tri-Blend Full-Zip Hooded Jacket
	29	5624	Adult Lightweight Long and Lean Tee
	29	5628	Adult Lightweight Long and Lean Long Sleeve Raglan Tee
	31	980	Adult Lightweight Tee
	31	880	Women's Lightweight Tee
	31	379	Women's Lightweight Fitted Tee
	32	982	Adult Lightweight V-Neck Tee
	32	88VL	Women's Lightweight V-Neck Tee
	34	986	Adult Lightweight Tank
	34	988	Adult Lightweight Ringer Tee
	37	887L	Women's Lightweight Long Sleeve Hooded Tee
	37	987	Adult Lightweight Long Sleeve Hooded Tee
MIDWEIGHT 170 g/m ²	38	900C	NEW Adult Midweight Curve Tee
	38	939	Adult Midweight Camouflage Tee
POLOS 210 g/m ²	41	6280	Adult Double Piqué Polo
	41	6280L	Women's Double Piqué Polo
LIGHT TERRY 186 g/m ²	45	73000	Unisex Light Terry Crew
	45	73120	Unisex Light Terry Jogger
	45	73500	Unisex Light Terry Hood
FRENCH TERRY 237 g/m ²	46	72000L	Women's Mid-Scoop French Terry
	46	72000	Adult Crewneck French Terry
	46	72500L	Women's Hooded French Terry
SWEATSHIRT 245 g/m ²	49	71600FL	Women's Full-Zip Hooded Sweatshirt
	49	71600	Adult Full-Zip Hooded Sweatshirt
	50	71000	Adult Crewneck Sweatshirt
	50	71000FL	Women's Crewneck Sweatshirt
ACCESSORIES	52	Caps	136 / 156 / 166 / 176 / 158
	54	Fit Guide / Sizing	



ANVIL®



T-SHIRTS

FREEDOM

FEATHERWEIGHT

STRETCH

TRI-BLEND

LIGHTWEIGHT

MIDWEIGHT

POLOS



FREEDOM



FREEDOM

NEW 37PVL / WOMEN'S FREEDOM SLEEVELESS TEE

Fit / Loose Fit **Sizes /** LXS – L2XL

Weight / 136 g/m²

Product Details / Pre-shrunk, 65% polyester/ 35% viscose; fabric 32/1; high stitch density for smoother printing surface; loose fit A-line silhouette with side seam; single-needle seamed 1.3 cm rib collar; twin-needle armholes and curved back bottom hem; TearAway label; Oeko-Tex® Standard 100 Certified

NEW 32PVL / WOMEN'S FREEDOM TANK

Fit / Loose Fit **Sizes /** LXS – L2XL

Weight / 136 g/m²

Product Details / Pre-shrunk, 65% polyester/ 35% viscose; fabric 32/1; high stitch density for smoother printing surface; loose fit A-line silhouette with side seam; self-fabric binding applied to neckline and armholes; twin-needle curved back bottom hem; TearAway label; Oeko-Tex® Standard 100 Certified

NEW 36PVL / WOMEN'S FREEDOM TEE

Fit / Loose Fit **Sizes /** LXS – L2XL

Weight / 136 g/m²

Product Details / Pre-shrunk, 65% polyester/ 35% viscose; fabric 32/1; high stitch density for smoother printing surface; loose fit silhouette with side seam and tapered bottom; drop shoulder and display tape; single-needle scoop neck with 1.3 cm rib collar; TearAway label; Oeko-Tex® Standard 100 Certified

37PVL	32PVL	36PVL	COLOURS
7	7	7	White
			Black
			Dusty Rose
			Heather City Green
			Heather Graphite
			Navy
			Terracotta

ANVIL®

A full-body photograph of a young man with dark, wavy hair and light-colored eyes. He is wearing a bright green, short-sleeved crew-neck t-shirt and blue denim jeans with significant distressing and rips at the knees. He has extensive black ink tattoos on his left arm, including a large sleeve piece with a compass rose and the word 'PLEASE'. He is also wearing a blue beaded bracelet on his right wrist and a silver ring on his right hand. The background is a plain, light-colored wall with vertical paneling. The text 'FEATHERWEIGHT' is overlaid in the center of the image, with 'FEATHER' in red and 'WEIGHT' in white.

FEATHERWEIGHT

FEATHERWEIGHT

361 / ADULT FEATHERWEIGHT TEE

Fit / Semi-Fitted Sizes / S – 2XL

Weight / 110 g/m²

Companion Style / 391

Product Details / Pre-shrunk, 100% cotton, Heather Colours are 65% polyester/ 35% cotton; fabric 40/1; cotton is ring spun yarn; side seam construction; shoulder-to-shoulder tape and 1.5 cm seamed collar; single-needle topstitched front neck; twin-needle sleeve and bottom hem; TearAway label; Oeko-Tex® Standard 100 Certified

391 / WOMEN'S FEATHERWEIGHT SCOOP TEE

Fit / Semi-Fitted Sizes / LXS – L2XL

Weight / 110 g/m²

Companion Style / 361

Product Details / Pre-shrunk, 100% cotton, Heather Colours are 65% polyester/ 35% cotton; fabric 40/1; cotton is ring spun yarn; semi-fitted contoured silhouette with side seam and display tape; single-needle seamed collar; twin-needle sleeve and bottom hem; TearAway label; Oeko-Tex® Standard 100 Certified

361	391	
8	12	COLOURS
		White
		Black
		Caribbean Blue
		Coral
		Green Apple
		Heather Dark Grey (65/35)
		Heather Green (65/35)
		Hot Pink
		Lemon Zest
		Navy
		Raspberry
		Red
		Silver





FEATHERWEIGHT

362 / ADULT FEATHERWEIGHT V-NECK TEE

Fit / Semi-Fitted Sizes / S – 2XL

Weight / 110 g/m²

Companion Style / 392

Product Details / Pre-shrunk, 100% cotton, Heather Colours are 65% polyester/35% cotton; fabric 40/1; cotton is ring spun yarn; side seam construction; shoulder-to-shoulder tape and 1.5 cm seamed mitred v-neck collar; single-needle topstitched front neck; twin-needle sleeve and bottom hem; TearAway label; Oeko-Tex® Standard 100 Certified

392 / WOMEN'S FEATHERWEIGHT V-NECK TEE

Fit / Semi-Fitted Sizes / LXS – L2XL

Weight / 110 g/m²

Companion Style / 362

Product Details / Pre-shrunk, 100% cotton, Heather Colours are 65% polyester/35% cotton; fabric 40/1; cotton is ring spun yarn; semi-fitted contoured silhouette with side seam and display tape; single-needle seamed mitred v-neck collar; twin-needle sleeve and bottom hem; TearAway label; Oeko-Tex® Standard 100 Certified

399 / WOMEN'S FEATHERWEIGHT LONG SLEEVE SCOOP TEE

Fit / Semi-Fitted Sizes / LS – L2XL

Weight / 110 g/m²

Product Details / Pre-shrunk, 100% cotton; fabric 40/1; cotton is ring spun yarn; semi-fitted contoured silhouette with side seam and display tape; single-needle seamed collar; twin-needle sleeve and bottom hem; TearAway label; Oeko-Tex® Standard 100 Certified

362	392	399	COLOURS
8	13	7	White
			Black
			Caribbean Blue
			Coral
			Green Apple
			Heather Dark Grey (65/35)
			Heather Green (65/35)
			Heather Purple (65/35)
			Hot Pink
			Lemon Zest
			Navy
			Raspberry
			Red
			Silver

ANVIL®





STRETCH

NEW 2455L / WOMEN'S STRETCH 3/4 SLEEVE TEE

Fit / Fitted Sizes / LXS – L2XL

Weight / 146 g/m²

Product Details / Pre-shrunk, 57% cotton/ 38% polyester/5% spandex; fabric 40/1; cotton is combed ring spun yarn; high stitch density for smoother printing surface; fitted contoured silhouette with side seam; boat neck with self-fabric binding; twin-needle 1.9 cm sleeve and bottom hem; TearAway label; Oeko-Tex® Standard 100 Certified

NEW 2420L / WOMEN'S STRETCH TANK

Fit / Fitted Sizes / LXS – L2XL

Weight / 146 g/m²

Product Details / Pre-shrunk, 57% cotton/ 38% polyester/5% spandex; fabric 40/1; cotton is combed ring spun yarn; high stitch density for smoother printing surface; fitted contoured silhouette with side seam; self-fabric binding applied to neck and armholes; twin-needle bottom hem; TearAway label; Oeko-Tex® Standard 100 Certified

2455L	2420L	COLOURS
5	12	White
		Black
		Caribbean Blue
		City Green
		Dusty Rose
		Heather Graphite
		Heather Grey
		Hot Pink
		Navy
		Raspberry
		Red
		Terracotta

ANVIL®



STRETCH



TRI-BLEND

6750L / WOMEN'S TRI-BLEND TEE

Fit / Semi-Fitted Sizes / LXS - L2XL

Weight / 159 g/m²

Companion Style / 6750

Product Details / Pre-shrunk, 50% polyester/ 25% cotton/25% viscose; fabric 32/1; cotton is combed ring spun yarn; high stitch density for smoother printing surface; semi-fitted contoured silhouette with side seam; shoulder-to-shoulder tape and seamed collar; twin-needle sleeve and curved bottom hem; TearAway label; Oeko-Tex® Standard 100 Certified

6750 / ADULT TRI-BLEND TEE

Fit / Semi-Fitted Sizes / XS - 2XL

Weight / 159 g/m²

Companion Style / 6750L

Product Details / Pre-shrunk, 50% polyester/ 25% cotton/25% viscose; fabric 32/1; cotton is combed ring spun yarn; high stitch density for smoother printing surface; side seam construction; shoulder-to-shoulder tape and 1.6 cm seamed collar; single-needle topstitched front neck; twin-needle sleeve and bottom hem; TearAway label; Oeko-Tex® Standard 100 Certified

6750L	6750	COLOURS
15	19	White
		Black
		Heather Aubergine
		Heather Blue
		Heather Bronze
		Heather Caribbean Blue
		Heather Dark Green
		Heather Dark Grey
		Heather Galapagos Blue
	NEW	Heather Graphite
		Heather Green
		Heather Grey
	NEW	Heather Maroon
	NEW	Heather Navy
		Heather Orange
		Heather Purple
		Heather Raspberry
		Heather Red
	NEW	Heather Slate
	NEW	Teal Ice





TRI-BLEND

6752 / ADULT TRI-BLEND

V-NECK TEE

Fit / Semi-Fitted Sizes / XS – 2XL

Weight / 159 g/m²

Companion Style / 6750VL

Product Details / Pre-shrunk, 50% polyester/ 25% cotton/25% viscose; fabric 32/1; cotton is combed ring spun yarn; high stitch density for smoother printing surface; side seam construction; shoulder-to-shoulder tape and 1.5 cm seamed mitred v-neck collar; single-needle topstitched front neck; twin-needle sleeve and bottom hem; TearAway label; Oeko-Tex® Standard 100 Certified

6750VL / WOMEN'S TRI-BLEND

V-NECK TEE

Fit / Semi-Fitted Sizes / LXS – L2XL

Weight / 159 g/m²

Companion Style / 6752

Product Details / Pre-shrunk, 50% polyester/ 25% cotton/25% viscose; fabric 32/1; cotton is combed ring spun yarn; high stitch density for smoother printing surface; semi-fitted contoured silhouette with side seam and display tape; 1.3 cm rib v-neck collar; single-needle topstitched front neck; twin-needle dolman sleeve and curved bottom hem; TearAway label; Oeko-Tex® Standard 100 Certified

6752	6750VL	
8	18	COLOURS
		White
		Black
		Heather Aubergine
		Heather Blue
		Heather Bronze
		Heather Caribbean Blue
		Heather Dark Green
		Heather Dark Grey
		Heather Galapagos Blue
	NEW	Heather Graphite
		Heather Green
		Heather Grey
	NEW	Heather Navy
		Heather Orange
		Heather Purple
		Heather Raspberry
		Heather Red
	NEW	Heather Slate
	NEW	Teal Ice

ANVIL®





TRI-BLEND

6756L / WOMEN'S TRI-BLEND

DEEP SCOOP 1/2 SLEEVE TEE

Fit / Semi-Fitted Sizes / LXS - L2XL

Weight / 159 g/m²

Product Details / Pre-shrunk, 50% polyester/ 25% cotton/25% viscose; fabric 32/1; cotton is combed ring spun yarn; high stitch density for smoother printing surface; semi-fitted contoured silhouette with side seam; deep scoop neck with self-fabric binding; twin-needle 1.3 cm sleeve and curved bottom hem; TearAway label; Oeko-Tex® Standard 100 Certified

6751L / WOMEN'S TRI-BLEND RACERBACK TANK

Fit / Semi-Fitted Sizes / LXS - L2XL

Weight / 159 g/m²

Product Details / Pre-shrunk, 50% polyester/ 25% cotton/25% viscose; fabric 32/1; cotton is combed ring spun yarn; high stitch density for smoother printing surface; semi-fitted contoured racerback silhouette with side seam; bound self-trim neck and armhole; twin-needle curved bottom hem; TearAway label; Oeko-Tex® Standard 100 Certified

6756L	6751L	
8	13	COLOURS
		White
		Black
		Heather Aubergine
		Heather Caribbean Blue
		Heather Dark Grey
		Heather Galapagos Blue
	NEW	Heather Graphite
		Heather Grey
	NEW	Heather Navy
		Heather Purple
	NEW	Heather Raspberry
		Heather Red
	NEW	Heather Slate

6755 / ADULT TRI-BLEND

3/4 SLEEVE RAGLAN TEE

Fit / Semi-Fitted Sizes / XS - 2XL

Weight / 159 g/m²

Product Details / Pre-shrunk, 50% polyester/ 25% cotton/ 25% viscose; fabric 32/1; cotton is combed ring spun yarn; high stitch density for smoother printing surface; side seam construction; contrast colour set-in collar and 3/4 raglan sleeve; single-needle topstitched back neck; twin-needle sleeve and bottom hem; TearAway label; Oeko-Tex® Standard 100 Certified

6755		COLOURS
10		White / Heather Dark Grey
		Black / White
		Heather Blue / Heather Grey
		Heather Grey / Heather Aubergine
		Heather Grey / Heather Blue
		Heather Grey / Heather Dark Green
		Heather Grey / Heather Dark Grey
		Heather Grey / Heather Galapagos Blue
		NEW Heather Grey / Heather Navy
		Heather Grey / Heather Red

ANVIL®





TRI-BLEND

6759 / ADULT TRI-BLEND FULL-ZIP HOODED JACKET

Fit / Semi-Fitted Sizes / S – 2XL

Weight / 159 g/m²

Companion Style / 6759L

Product Details / Pre-shrunk, 50% polyester/
25% cotton/25% viscose; fabric 32/1; cotton
is combed ring spun yarn; high stitch density
for smoother printing surface; side seam
construction; unlined hood, metallic zipper with
colour matching tape; pouch pockets; twin-
needle sleeve hem; self-fabric band; TearAway
label; Oeko-Tex® Standard 100 Certified

6759L / WOMEN'S TRI-BLEND FULL-ZIP HOODED JACKET

Fit / Semi-Fitted Sizes / LXS – L2XL

Weight / 159 g/m²

Companion Style / 6759

Product Details / Pre-shrunk, 50% polyester/
25% cotton/25% viscose; fabric 32/1; cotton
is combed ring spun yarn; high stitch density
for smoother printing surface; semi-fitted
contoured silhouette with side seam and display
tape; unlined hood; metallic zipper with colour
matching tape; pouch pockets; twin-needle
sleeve and curved bottom hem; TearAway label;
Oeko-Tex® Standard 100 Certified

6759	6759L	
6	6	COLOURS
		Black
		Heather Blue
		Heather Caribbean Blue
		Heather Dark Grey
		Heather Grey
		Heather Red





LIGHTWEIGHT

LIGHTWEIGHT

5624 / ADULT LIGHTWEIGHT LONG AND LEAN TEE

Fit / Fitted Sizes / S - 2XL

Weight / 146 g/m²

Product Details / Pre-shrunk, 100% cotton, Heather Graphite is 50% polyester/50% cotton; fabric 32/1; cotton is combed ring spun yarn, cotton is ring spun yarn for Heather Graphite only; high stitch density for smoother printing surface; side seam construction, longer body with vents and 5.1 cm drop tail; shoulder-to-shoulder tape and 1.3 cm seamed collar; twin-needle sleeve and bottom hem; TearAway label; Oeko-Tex® Standard 100 Certified

5628 / ADULT LIGHTWEIGHT LONG AND LEAN LONG SLEEVE RAGLAN TEE

Fit / Fitted Sizes / S - 2XL

Weight / 146 g/m²

Product Details / Pre-shrunk, 100% cotton, Heather Graphite is 50% polyester/50% cotton; fabric 32/1; cotton is combed ring spun yarn, cotton is ring spun yarn for Heather Graphite only; high stitch density for smoother printing surface; side seam construction, longer body with vents and 5.1 cm drop tail; shoulder-to-shoulder tape and 1.3 cm seamed collar; raglan long sleeves; twin-needle sleeve and bottom hem; TearAway label; Oeko-Tex® Standard 100 Certified

5624	5628	
4	4	COLOURS
		White
		Black
		Heather Graphite (50/50)
		Silver

LONG & LEAN FITTED ADULT

SIZE	CHEST	LENGTHS
S	81-86.5	73.5-76
M	91.5-96.5	76-78.5
L	101.5-106.5	78.5-81
XL	112-117	81-84
2XL	122-127	84-86.5

Size chart measurements are in cm.

ANVIL®





LIGHTWEIGHT

980 / ADULT LIGHTWEIGHT TEE

Fit / Semi-Fitted

Sizes / S – 2XL

Weight / 146 g/m²

Companion Styles / 880, 379

Product Details / Pre-shrunk, 100% cotton, Heather Grey is 90% cotton/10% polyester, Heather Graphite is 50% polyester/50% cotton, all other Heather Colours and Neon Colours are 65% polyester/35% cotton; fabric 32/1; cotton is combed ring spun yarn, cotton is ring spun yarn for Heather Colours and Neon Colours only; high stitch density for smoother printing surface; tubular construction; shoulder-to-shoulder tape and seamed collar; twin-needle sleeve and bottom hem; TearAway label; Oeko-Tex® Standard 100 Certified

880 / WOMEN'S LIGHTWEIGHT TEE

Fit / Semi-Fitted

Sizes / LS – L2XL

Weight / 146 g/m²

Companion Style / 980

Product Details / Pre-shrunk, 100% cotton, Heather Grey is 90% cotton/10% polyester, Heather Graphite is 50% polyester/50% cotton, all other Heather Colours and Neon Colours are 65% polyester/35% cotton; fabric 32/1; cotton is combed ring spun yarn, cotton is ring spun yarn for Heather Colours and Neon Colours only; high stitch density for smoother printing surface; semi-fitted contoured silhouette with side seam; shoulder-to-shoulder tape and seamed collar; twin-needle sleeve and bottom hem; TearAway label; Oeko-Tex® Standard 100 Certified

379 / WOMEN'S LIGHTWEIGHT FITTED TEE

Fit / Fitted Sizes / LS – L2XL

Weight / 146 g/m²

Companion Style / 980

Product Details / Pre-shrunk, 100% cotton, Heather Grey is 90% cotton/10% polyester, all other Heather Colours are 65% polyester/35% cotton; fabric 32/1; cotton is combed ring spun yarn, cotton is ring spun yarn for Heather Colours only; high stitch density for smoother printing surface; fitted contoured silhouette with side seam and display tape; single-needle neck; twin-needle cap sleeve and bottom hem; TearAway label; Oeko-Tex® Standard 100 Certified

980	880	379	
35	18	10	COLOURS
			White
			Black
			Caribbean Blue
			Charcoal
			CharityPink
			Chocolate
			City Green
NEW	NEW		Coral
NEW	NEW		Dusty Rose
			Green Apple
			Heather Blue (65/35)
			Heather Dark Grey (65/35)
NEW	NEW		Heather Graphite (50/50)
			Heather Green (65/35)
			Heather Grey (90/10)
NEW	NEW		Heather Navy (65/35)
			Heather Purple (65/35)
			Hot Pink
			Independence Red
			Kelly Green
			Light Blue
			Navy
			Neon Blue (65/35)
			Neon Green (65/35)
			Neon Orange (65/35)
			Neon Pink (65/35)
			Neon Yellow (65/35)
			Orange
NEW	NEW		Pool Blue
			Purple
			Red
			Royal Blue
			Smoke
			Spring Yellow
NEW	NEW		Teal Ice
NEW	NEW		Terracotta
NEW	NEW		Violet



ANVIL®

LIGHTWEIGHT

982 / ADULT LIGHTWEIGHT V-NECK TEE

Fit / Semi-Fitted Sizes / S – 2XL

Weight / 146 g/m² Companion Style / 88VL

Product Details / Pre-shrunk, 100% cotton, Heather Grey is 90% cotton/10% polyester, Heather Graphite is 50% polyester/50% cotton, all other Heather Colours are 65% polyester/35% cotton; fabric 32/1; cotton is combed ring spun yarn, cotton is ring spun yarn for Heather Colours only; high stitch density for smoother printing surface; tubular construction; shoulder-to-shoulder tape and seamed mitred v-neck collar; twin-needle sleeve and bottom hem; TearAway label; Oeko-Tex® Standard 100 Certified

88VL / WOMEN'S LIGHTWEIGHT V-NECK TEE

Fit / Semi-Fitted Sizes / LS – L2XL

Weight / 146 g/m² Companion Style / 982

Product Details / Pre-shrunk, 100% cotton, Heather Grey is 90% cotton/10% polyester, Heather Graphite is 50% polyester/50% cotton; fabric 32/1; cotton is combed ring spun yarn, cotton is ring spun yarn for Heather Colours only; high stitch density for smoother printing surface; semi-fitted contoured silhouette with side seam; shoulder-to-shoulder tape and 1.3 cm rib v-neck collar; twin-needle sleeve and bottom hem; TearAway label; Oeko-Tex® Standard 100 Certified

982	88VL	
12	8	COLOURS
		White
		Black
		Caribbean Blue
		Charcoal
		City Green
		Heather Blue (65/35)
NEW	NEW	Heather Graphite (50/50)
		Heather Grey (90/10)
NEW		Heather Navy (65/35)
		Heather Purple (65/35)
		Hot Pink
		Independence Red
		Navy
		Red
		Smoke







LIGHTWEIGHT

986 / ADULT LIGHTWEIGHT TANK

Fit / Semi-Fitted Sizes / S – 2XL

Weight / 146 g/m²

Product Details / Pre-shrunk, 100% cotton, Heather Grey is 90% cotton/10% polyester, all other Heather Colours are 65% polyester/35% cotton; fabric 32/1; cotton is combed ring spun yarn, cotton is ring spun yarn for Heather Colours only; high stitch density for smoother printing surface; tubular construction; bound self-trim neck and armhole; twin-needle bottom hem; TearAway label; Oeko-Tex® Standard 100 Certified

986

8	COLOURS
	White
	Black
	Heather Grey (90/10)
	Navy
	Red
	White / Heather Grey (90/10)
	Caribbean Blue / Heather Grey (90/10)
	Heather Blue (65/35) / Heather Grey (90/10)

988 / ADULT LIGHTWEIGHT RINGER TEE

Fit / Semi-Fitted Sizes / S – 2XL

Weight / 146 g/m²

Product Details / Pre-shrunk, 100% cotton, Heather Grey is 90% cotton/10% polyester, all other Heather Colours are 65% polyester/35% cotton; fabric 32/1; cotton is combed ring spun yarn, cotton is ring spun yarn for Heather Colours only; high stitch density for smoother printing surface; tubular construction; contrast colour binding at neck and sleeves; twin-needle bottom hem; TearAway label; Oeko-Tex® Standard 100 Certified

988

7	COLOURS
	White / Black
	White / Red
	Heather Blue (65/35) / Navy
	Heather Green (65/35) / Kelly Green
	Heather Grey (90/10) / Heather Dark Grey (65/35)
	Heather Red (65/35) / Red
	Independence Red / Navy

ANVIL®





LIGHTWEIGHT

887L / WOMEN'S LIGHTWEIGHT LONG SLEEVE HOODED TEE

Fit / Semi-Fitted Sizes / LS – L2XL

Weight / 146 g/m² Companion Style / 987

Product Details / Pre-shrunk, 100% cotton, Heather Colours are 65% polyester/35% cotton; fabric 32/1; cotton is combed ring spun yarn, cotton is ring spun yarn for Heather Colours only; high stitch density for smoother printing surface; semi-fitted contoured silhouette with side seam and display tape; relaxed unlined hood with contrast drawcord; three-needle neck, sleeve and bottom hem; TearAway label; Oeko-Tex® Standard 100 Certified






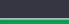




887L	
10	COLOURS
	White / Dark Grey
	Black / Dark Grey
	Caribbean Blue / Dark Grey
	Heather Blue (65/35) / Neon Yellow
	Heather Dark Grey (65/35) / Dark Grey
	Heather Green (65/35) / Neon Yellow
	Heather Purple (65/35) / Neon Yellow
	Hot Pink / Neon Yellow
	Navy / Dark Grey
	Red / Dark Grey

987 / ADULT LIGHTWEIGHT LONG SLEEVE HOODED TEE

Fit / Semi-Fitted Sizes / S – 2XL

Weight / 146 g/m² Companion Style / 887L

Product Details / Pre-shrunk, 100% cotton, Heather Colours are 65% polyester/35% cotton; fabric 32/1; cotton is combed ring spun yarn, cotton is ring spun yarn for Heather Colours only; high stitch density for smoother printing surface; tubular construction; display tape; relaxed unlined hood with contrast drawcord; twin-needle neck, sleeve and bottom hem; TearAway label; Oeko-Tex® Standard 100 Certified

987	
10	COLOURS
	White / Dark Grey
	Black / Dark Grey
	Caribbean Blue / Dark Grey
	Heather Blue (65/35) / Neon Yellow
	Heather City Green (65/35) / Neon Yellow
	Heather Dark Grey (65/35) / Dark Grey
	Heather Green (65/35) / Neon Yellow
	Heather Purple (65/35) / Neon Yellow
	Navy / Dark Grey
	Red / Dark Grey



ANVIL®



MIDWEIGHT

NEW 900C / ADULT MIDWEIGHT CURVE TEE

Fit / Classic Sizes / S – 2XL

Weight / 170 g/m²

Product Details / 100% polyester; fabric 29/1; wicking and antimicrobial properties; side seam construction; shoulder-to-shoulder tape and 1.9 cm seamed collar; twin-needle sleeve and curved bottom hem; TearAway label; Oeko-Tex® Standard 100 Certified

900C	
5	COLOURS
	White
	Black
	Maroon
	Navy
	Silver

939 / ADULT MIDWEIGHT CAMOUFLAGE TEE

Fit / Classic Sizes / S – 2XL

Weight / 170 g/m²

Product Details / Pre-shrunk, 100% cotton; cotton is ring spun yarn; fabric 26/1; side seam construction; shoulder-to-shoulder tape and seamed collar; twin-needle neck, sleeve and bottom hem; TearAway label; Oeko-Tex® Standard 100 Certified

939	
2	COLOURS
	Camouflage Green
	Camouflage Sand

ANVIL®



MIDWEIGHT



POLOS

POLOS

6280 / ADULT DOUBLE PIQUÉ POLO

Fit / Semi-Fitted Sizes / S – 2XL

Weight / 210 g/m²

Companion Style / 6280L

Product Details / Pre-shrunk, 100% cotton, double piqué; 90% cotton/10% polyester, double piqué for Heather Grey only; fabric 30/1; cotton is combed ring spun yarn, cotton is ring spun yarn for Heather Grey only; side seam and 2.5 cm side vents; rib knit contoured collar and hemmed sleeve; two dyed-to-match buttons; two-button placket; combination colour options have a contrast colour collar and inner placket; woven label; care label; Oeko-Tex® Standard 100 Certified

6280L / WOMEN'S DOUBLE PIQUÉ POLO

Fit / Semi-Fitted Sizes / LS – L2XL

Weight / 210 g/m²

Companion Style / 6280

Product Details / Pre-shrunk, 100% cotton, double piqué; 90% cotton/10% polyester, double piqué for Heather Grey only; fabric 30/1; cotton is combed ring spun yarn, cotton is ring spun yarn for Heather Grey only; semi-fitted contoured silhouette with side seam and 2.5 cm side vents; rib knit contoured collar and hemmed sleeve; three dyed-to-match buttons; three button placket; combination colour options have a contrast colour collar and inner placket; woven label; care label; Oeko-Tex® Standard 100 Certified

6280	6280L	
17	17	COLOURS
		White
		Black
		Azalea
		Cobblestone
		Forest Green
		Heather Grey (90/10)
		Key Lime
		Lemon Zest
		Mandarin Orange
		Maroon
		Navy
		Pool Blue
		Red
		Royal Blue
		White / Navy
		Black / Charcoal
		Red / Navy





SWEATSHIRT

LIGHT TERRY

FRENCH TERRY

SWEATSHIRT



ANVIL

A full-page fashion photograph featuring a man and a woman. The man, on the left, has dark, wavy hair and a light beard. He is wearing a black long-sleeved crewneck sweater and light grey sweatpants. He stands with his hands in his pockets, looking directly at the camera. The woman, on the right, has long, dark hair and is wearing a white ribbed tank top and black track pants with a drawstring waist. She is leaning her right arm against the man's shoulder and looking towards the camera. She is wearing white high-top sneakers with a mesh upper. The background is a plain, light grey studio backdrop.

LIGHT TERRY

LIGHT TERRY

NEW 73000 / UNISEX

LIGHT TERRY CREW

Fit / Semi-Fitted Sizes / XS – 3XL

Weight / 186 g/m²

Product Details / Pre-shrunk, 60% cotton/ 40% polyester; fabric 32/1; cotton is combed ring spun yarn; high stitch density for smoother printing surface; semi-fitted with side seam construction; single-needle seamed collar; self-fabric back neck tape; 1x1 rib spandex cuffs, collar and waistband; open bottom with 10.2 cm side vents; TearAway label; Oeko-Tex® Standard 100 Certified

NEW 73120 / UNISEX

LIGHT TERRY JOGGER

Fit / Semi-Fitted Sizes / XS – 3XL

Weight / 186 g/m²

Product Details / Pre-shrunk, 60% cotton/ 40% polyester; fabric 32/1; cotton is combed ring spun yarn; high stitch density for smoother printing surface; semi-fitted with side seam construction; multi-needle waistband with exposed flatcord; welt pockets; 1x1 rib spandex on legs cuffs; TearAway label; Oeko-Tex® Standard 100 Certified

NEW 73500 / UNISEX

LIGHT TERRY HOOD

Fit / Semi-Fitted Sizes / XS – 3XL

Weight / 186 g/m²

Product Details / Pre-shrunk, 60% cotton/ 40% polyester; fabric 32/1; cotton is combed ring spun yarn; high stitch density for smoother printing surface; semi-fitted with side seam construction; unlined hood; self-fabric back neck tape; 1x1 rib spandex cuffs and waistband; open bottom with 10.2 cm side vents; inside patch pocket with welt pocket opening; TearAway label; Oeko-Tex® Standard 100 Certified

73000	73120	73500	COLOURS
6	3	6	Black
			Heather City Green
			Heather Graphite
			Heather Grey
			Navy
			Terracotta



ANVIL®



FRENCH TERRY

72000L / WOMEN'S MID-SCOOP FRENCH TERRY

Fit / Semi-Fitted **Sizes** / LS – L2XL

Weight / 237 g/m²

Companion Style / 72000

Product Details / Pre-shrunk, 60% polyester/ 40% cotton terry fleece; fabric 30/1; cotton is combed ring spun yarn; semi-fitted contoured silhouette with front seam; 0.6 cm contrast Grey neck tape; three-needle topstitch at neck, shoulder and waistband; 5.1 cm rolled forward shoulder; 7.6 cm 1x1 rib spandex cuffs and waistband; woven label; care label; Oeko-Tex® Standard 100 Certified

72000 / ADULT CREWNECK FRENCH TERRY

Fit / Classic **Sizes** / S – 2XL

Weight / 237 g/m²

Companion Style / 72000L

Product Details / Pre-shrunk, 60% polyester/ 40% cotton terry fleece; fabric 30/1; cotton is combed ring spun yarn; tubular construction; 0.6 cm contrast Grey neck tape; twin-needle topstitch at neck, shoulder and waistband; 5.1 cm rolled forward shoulder; 7.6 cm 1x1 rib knit spandex cuffs and waistband; woven label; care label; Oeko-Tex® Standard 100 Certified

72500L / WOMEN'S HOODED FRENCH TERRY

Fit / Semi-Fitted **Sizes** / LS – L2XL

Weight / 237 g/m²

Product Details / Pre-shrunk, 60% polyester/ 40% cotton terry fleece; fabric 30/1; cotton is combed ring spun yarn; semi-fitted contoured silhouette with front seam; unlined crossover hood; 0.6 cm contrast Grey neck tape; three-needle topstitch on hood, neck and shoulder; three-needle sleeve and bottom hem; pouch pocket; woven label; care label; Oeko-Tex® Standard 100 Certified

72000L	72000	72500L	
7	4	7	COLOURS
			Black
			Heather Blue
			Heather Dark Grey
			Heather Green
			Heather Grey
			Heather Purple
			Navy

ANVIL®

A fashion advertisement for French Terry. A young man with dark, wavy hair is sitting on a large, patterned suitcase. He is wearing a grey crewneck sweater and blue jeans with significant rips at the knees. He has a black wristwatch on his left wrist. A young woman with long, wavy brown hair is standing next to him, leaning her right hand on his shoulder. She is wearing a black long-sleeved hoodie with a cowl neck and blue jeans. The background is a textured, light-colored wall. The brand name 'FRENCH TERRY' is overlaid in the center of the image.

FRENCH TERRY



SWEATSHIRT

SWEATSHIRT

71600FL / WOMEN'S FULL-ZIP HOODED SWEATSHIRT

Fit / Classic Sizes / LS – L2XL

Weight / 245 g/m²

Companion Style / 71600

Product Details / Pre-shrunk, 75% cotton/
25% polyester fleece, Heather Grey is
70% cotton/30% polyester fleece; fabric 30/1;
cotton is combed ring spun yarn; unlined
hood with White drawcords; 0.6 cm contrast
White neck tape; back patch; three-needle
topstitch at neck; 5.1 cm rolled forward
shoulder; contrast White metallic zipper;
pouch pockets; 1x1 rib spandex cuffs
and waistband; woven label; care label;
Oeko-Tex® Standard 100 Certified

71600 / ADULT FULL-ZIP HOODED SWEATSHIRT

Fit / Classic Sizes / S – 3XL

Weight / 245 g/m²

Companion Style / 71600FL

Product Details / Pre-shrunk, 75% cotton/
25% polyester fleece, Heather Grey is
70% cotton/30% polyester fleece; fabric 30/1;
cotton is combed ring spun yarn; tubular
construction; unlined hood with White
drawcords; 0.6 cm contrast White neck tape;
back patch; twin-needle topstitch at neck;
5.1 cm rolled forward shoulder; contrast White
metallic zipper; pouch pockets; 1x1 rib spandex
cuffs and waistband; woven label; care label;
Oeko-Tex® Standard 100 Certified

71600FL 71600

9	9	COLOURS
		White
		Black
		Charcoal
		City Green
		Green Apple
		Heather Grey (70/30)
		Independence Red
		Navy
		Royal Blue



ANVIL®



SWEATSHIRT

71000 / ADULT CREWNECK SWEATSHIRT

Fit / Classic Sizes / S - 3XL

Weight / 245 g/m²

Companion Style / 71000FL

Product Details / Pre-shrunk, 75% cotton/ 25% polyester fleece, Heather Grey is 70% cotton/30% polyester fleece; fabric 30/1; cotton is combed ring spun yarn; tubular construction; 0.6 cm contrast White neck tape; back patch; twin-needle topstitch at neck and shoulder; 5.1 cm rolled forward shoulder; 1x1 rib spandex cuffs and waistband; woven label; care label; Oeko-Tex® Standard 100 Certified

71000FL / WOMEN'S CREWNECK SWEATSHIRT

Fit / Classic Sizes / LS - L2XL

Weight / 245 g/m²

Companion Style / 71000

Product Details / Pre-shrunk, 75% cotton/ 25% polyester fleece, Heather Grey is 70% cotton/30% polyester fleece; fabric 30/1; cotton is combed ring spun yarn; 0.6 cm contrast White neck tape; back patch; three-needle topstitch at neck and shoulder; 5.1 cm rolled forward shoulder; 1x1 rib spandex cuffs and waistband; woven label; care label; Oeko-Tex® Standard 100 Certified

71000 71000FL		
9	9	COLOURS
		White
		Black
		Charcoal
		City Green
		Green Apple
		Heather Grey (70/30)
		Independence Red
		Navy
		Royal Blue

ANVIL®



CAPS

136 / Solid Brushed Twill Cap

Size / Adjustable, OSFA

Product Details / 100% cotton twill; six-panel; constructed crown with fused buckram backing, top button and six sewn eyelets; matched colour sweatband; fabric hideaway closure with brass buckle and grommet; pre-curved bill has six rows of stitching; woven label

156 / Solid Low-Profile Twill Cap

Size / Adjustable, OSFA

Product Details / 100% cotton twill; six-panel, low-profile; unconstructed crown with top button and two metal grommets on side panels; matched colour sweatband; fabric hideaway closure with brass grommet; pre-curved bill has four rows of stitching; woven label

166 / Solid Low-Profile Sandwich Trim Twill Cap

Size / Adjustable, OSFA

Product Details / 100% cotton twill; six-panel, low-profile; unconstructed crown with top button and six sewn eyelets; pigment-dyed fabric with matched colour sweatband; fabric closure with hook and loop fasteners; pre-curved bill has a Navy sandwich trim and four rows of stitching; woven label

176 / Solid Low-Profile Brushed Twill Cap

Size / Adjustable, OSFA

Product Details / 100% cotton twill; six-panel, low-profile; unconstructed crown with top button and six sewn eyelets; contrast colour underbill, sweatband and tape seams (all caps have a Wheat underbill, Wheat has a Khaki underbill); fabric hideaway closure with silver buckle; pre-curved bill has four rows of stitching; woven label

158 / Solid Low-Profile Twill Visor

Size / Adjustable, OSFA

Product Details / 100% cotton twill; three-panel, low-profile; matched colour sweatband; fabric closure with hook and loop fasteners; pre-curved bill has four rows of stitching; woven label

136	156	166	176	158	
4	8	4	5	5	COLOURS
					White
					Black
					Aqua
					Burnt Orange
					CharityPink
					Flamingo
					Khaki
					Navy
					Red
					Royal Blue
					Sunshine
					Tangerine
					T. Orange
					Wheat

136 /



156 /



166 /



176 /



158 /





The rich 100-year history of the ANVIL® brand has evolved to meet the expectations of the times. Our brand promise is to deliver affordable, fashionable products that stay true to our core company values.

Our Genuine Responsibility™ program, which leads the way in corporate social responsibility practices, is focused on four key pillars, namely environmental stewardship, community engagement, empowering our people and product safety and quality. The commitments we have made within these programs are a key element of our overall corporate strategy, focused on treating our employees with respect and dignity, providing safe and ethical work environments and empowering our people with education and training opportunities. In 2016 alone, we delivered close to 825,000 man-hours of training to our 48,000 employees. As part of our pursuit of continuous improvement, we consistently challenge our teams to develop new methods to reduce our impact on the planet.

RESPONSIBILITY IS WOVEN INTO EVERYTHING WE MAKE

As part of the Gildan family, sustainability and responsibility are what we're made of—and part of everything we do. As one of the world's largest vertically integrated manufacturers of basic apparel, our company has direct control over almost the entire manufacturing process, from raw fibres to finished garments, allowing us to pursue our vision of Making Apparel Better™.

Every year we publish a Genuine Responsibility Report, reporting on the progress we have made in all areas of corporate social responsibility. In 2016 we made good headway in a number of important areas, including reductions in our water intensity by 5% and energy intensity by 10%. We also recycled or repurposed close to 86% of the company's overall waste.

Our proactive approach and ongoing commitment to improving our environmental and social impacts are what sets us apart from most apparel brands. We will continue to leverage our scale, manufacturing and operational expertise by employing a life cycle approach to uncover positive changes to how we make apparel, run our company and engage with the communities where we operate.

For more information on our Genuine Responsibility™ programme visit genuinegildan.com.



When referring to the company to which ANVIL® belongs, it refers to Gildan Activewear Inc. and its affiliates.
WRAP®: Awarded to our sewing facilities in Bangladesh, Central America and the Caribbean basin.
SEDEX®: Gildan is a member of SEDEX®.
Oeko-Tex®: All Gildan® and ANVIL® branded apparel (except ANVIL® caps) is certified under Oeko-Tex® Standard 100 Class I or II. Visit anvil.eu to view our current Oeko-Tex® certificates.
ANVIL® is a registered trademark owned by Gildan Activewear SRL.
© 2017-2018 Gildan Activewear SRL.



FIT GUIDE / SIZING

FITTED

Follows the shape of the body along chest, waist and hip / form-fitting contoured silhouette / side seam construction / feminine sleeve shape and neckline

LOOSE

Drapes the body for a fit that follows your every move / relaxed silhouette / side seam construction / feminine shape with hi-lo waistlines

SEMI-FITTED

Slightly accentuates the body and flatters the curves / contoured silhouette / side seam construction / feminine sleeve shape and neckline

WOMEN'S

SIZE	CHEST	WAIST	HIPS
LXS	84-86.5	63.5-66	88-91.5
LS	88-91.5	68.5-71	94-96.5
LM	94-96.5	73.5-76	99-101.5
LL	99-101.5	78.5-81.5	104-106.5
LXL	104-106.5	84-86.5	109-111.5
L2XL	109-111.5	88-91.5	114-116.5

WOMEN'S

SIZE	UK FITTED	UK SEMI/LOOSE	EU FITTED	EU SEMI/LOOSE
LXS	-	6-8	-	34-36
LS	6-8	8-10	34-36	38-40
LM	8-10	10-12	36-38	40-42
LL	10-12	14-16	40-42	42-44
LXL	12-14	16-18	42-44	44-46
L2XL	14-16	18-20	44	46-48

On all charts, size chart measurements for chest, waist, hips and height are in cm.
UK & European standard sizes are for guidance, fit may vary slightly.

FITTED

LOOSE

SEMI-FITTED



CLASSIC FIT

Drapes away from the body for a relaxed fit and extra movement / fuller silhouette / tubular construction / fuller sleeve

SEMI-FITTED

Narrower shoulder breadth / side seam construction on some styles

FITTED

Follows the shape of the body among the chest waist and hip / form-fitting silhouette

ADULT

SIZE	CHEST	UK	EU
XS	76-81.5	30-32	44-46
S	86.5-91.5	34-36	46-48
M	96.5-101.5	38-40	48-50
L	106.5-111.5	42-44	52-54
XL	117-122	46-48	54-56
2XL	127-132	50-52	56-58
3XL	137-142	52-54	58-60

FITTED ADULT

SIZE	CHEST	LENGTHS	UK TO FIT	EU
S	81-86.5	73.5-76	30-32	44-46
M	91.5-96.5	76-78.5	34-36	46-48
L	101.5-106.5	78.5-81	38-40	48-50
XL	112-117	81-84	42-44	52-54
2XL	122-127	84-86.5	44-48	54-56

On all charts, size chart measurements for chest, waist, hips and height are in cm.
UK & European standard sizes are for guidance, fit may vary slightly.

CLASSIC



SEMI-FITTED



FITTED



ANVIL[®]

EUROPE 2018

